



**St. George's Episcopal Church
Austin, Texas**

Parish Profile
August 2021

Who We Are

St. George's Episcopal Church is a vibrant, active community located on Interstate 35 in Central Austin, where East and West Austin intersect.

A warm and welcoming congregation, we are passionate about service to others and acceptance of all who seek God or a deeper knowledge of God. We have open and curious minds, and value learning and community. We are nonprofit leaders, librarians, lawyers, nurses, engineers, and poets. In a loving and D.I.Y. Austin spirit, we make our own communion bread, arrange our own altar flowers, and crafted our own communion kneelers and stained glass windows.

Although the parish is more than 70 years old, we have had only three rectors in the past 50 years, which speaks to the deep connections forged between clergy and parishioners. As we search for a new rector, we hope and pray for someone who will connect with us as we continue our journey in mission.



parishioner insight

May it be said of us, the mighty creative Spirit dwells in us. We already act in mercy and love in many ways. But our boldness and humility must increase. The times require more of us.

What we believe

Our mission

The mission of St. George's Episcopal Church is to worship God and share our faith through word, action, and service.



Our vision

In seeking to worship God and share our faith through word, action, and service, St. George's strives to be a beacon of peace and justice in Austin.



Our values

At our core, we value:

Worship

Outreach

Community

Acceptance

Lifelong Learning





Core Value: Worship

As Episcopalians, we hold that how we pray and worship God is central to who we are and what we do. While the *Book of Common Prayer* and the *Hymnal 1982* are the central cohesive elements of our prayer life, we strive to provide a variety of worship services and approaches to assist all who seek a closer relationship with God.

Sunday morning services, the heart of the St. George's community, provide the ideal time for us to gather before God, give thanks, hear the Word, and receive nourishment that sustains us for our mission beyond the church doors.

St. George's worship is centered on the Holy Eucharist. We observe the changes in the liturgical seasons with accompanying changes in our Prayers of the People, Eucharistic Prayer, and post-

Communion prayer. We also change service music with each liturgical season and make other changes as appropriate to the season.

Our average attendance at Sunday morning services for the past three years has numbered 100 (2018), 90 (2019), and 91 (2020).

Sunday Services



Before COVID, St. George's celebrated two services each Sunday:

- Holy Eucharist Rite I at 8:00 a.m., with sermon but no music
- Holy Eucharist Rite II at 10:30 a.m., with music, followed by coffee hour

Once the pandemic precautions began in March 2020, St. George's offered one virtual worship service on Facebook and Zoom on Sunday mornings at 10:30 a.m. To maintain community, virtual coffee hour was streamed on Zoom after the service.

We began moving back into the sanctuary for Sunday morning worship in mid-April 2021 at 10:30 a.m., continuing to livestream the service as well. Music and singing returned fully in July 2021, and in-person coffee hour resumed then as well. For health and safety precautions, we currently receive only the host at Holy Communion and maintain social distancing in the pews and during the passing of the Peace.

At this writing, infections and hospitalizations are increasing, requiring further adjustments as we prioritize the health and safety of our members and the wider Austin community. Even so, we maintain hope that our two Sunday services will be restored by the time we call a new rector.



Special Services



St. George's observes the richness of our Episcopal liturgy and the liturgical calendar with special services throughout the year, including:

- Epiphany (shared with refugee families at Casa Marianella)
- Ash Wednesday, with imposition of ashes
- Palm Sunday, with outdoor processional
- Holy Week
 - Monday – Wednesday Holy Eucharist
 - Maundy Thursday, with footwashing, Agape meal, Holy Eucharist, stripping of the altar, and Gethsemane Vigil
 - Good Friday Stations of the Cross
 - Good Friday liturgy, with Eucharist from the reserved Sacrament
- Easter Vigil
- Easter Day
- Pentecost
- All Saints' Sunday, with Día de los Muertos altar
- Christmas Eve
 - Early service with children's Christmas pageant
 - Late service with choral music and often instrumentalists
- Service of Christmas Lessons and Carols on the first or second Sunday after Christmas Day

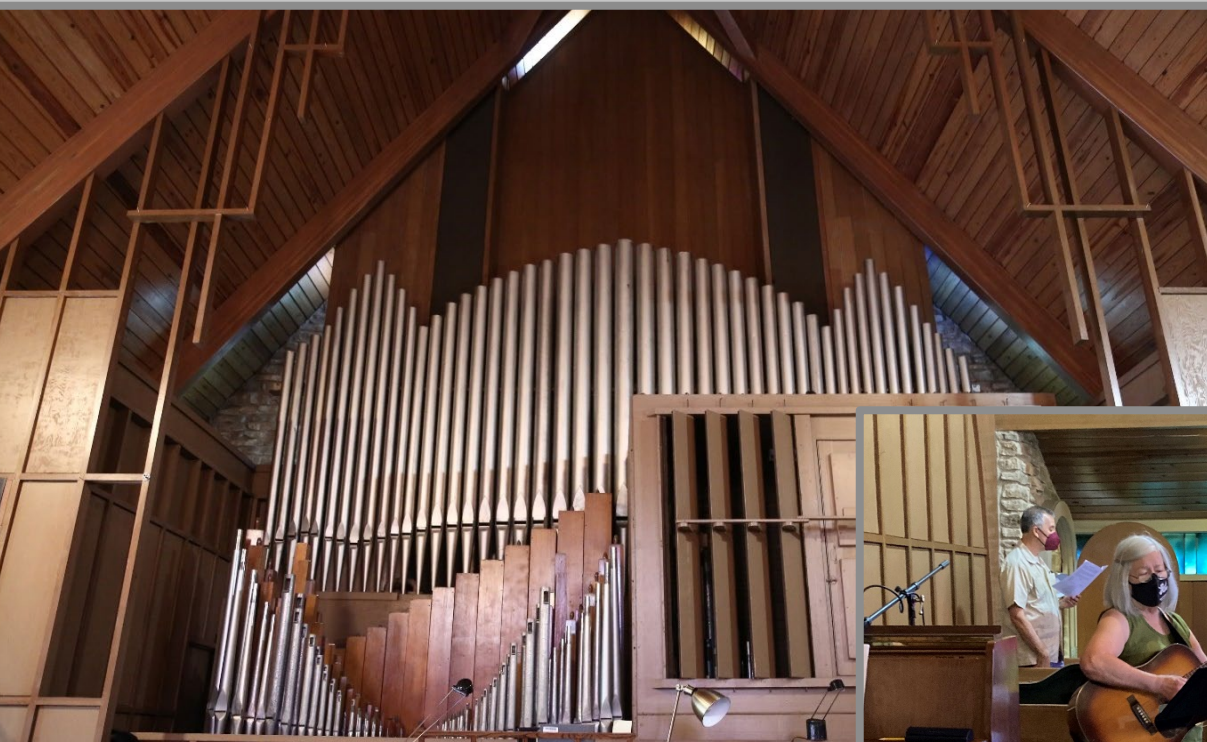




parishioner insight

Birthday and anniversary blessings are incredibly special at St. George's. Where else would the pews nearly empty in order for parishioners to lay hands on each other and the individual celebrating another year? It is a brief time of prayerful, physical connection that reflects our loving community.





We love to make a joyful noise at St. George's! We are a singing congregation, led by our small but strong choir. Worship music is selected to reflect the day's scripture readings and the liturgical season. Our principal hymnals, *The Hymnal 1982* and *Gather*, offer a blend of traditional, contemplative, and contemporary hymns. The choir rehearses on Tuesday evenings and sings a choral anthem at the 10:30 a.m. service. In keeping with St. George's informal culture, the choir does not vest or process during services, nor do we require auditions to join. At Christmas (and other times as possible), our children and young people offer their delightful gifts of music through instruments and song.



Piano and organ are the main instruments used to accompany congregational singing, but we encourage those with talents on other musical instruments to offer their gifts as they feel called. We are in the process of replacing our ailing 1907 Kilgen pipe organ with a Hauptwerk virtual pipe organ and look forward to hearing the glorious sound of a pipe organ at St. George's in the very near future.

Worship Ministries

As liturgy is the work of the people, making worship services happen requires the participation and leadership of both laity and clergy. Lay ministers at St. George's give faithfully of their time and talent to support and enhance our worship services in so many ways.

- Acolytes
- Altar Guild
- Bread Bakers
- Choir
- Flower Guild
- Intercessors
- Lay Eucharistic Ministers
- Lay Eucharist Visitors
- Lectors
- Technology Assistants
- Ushers





► Core Value: Outreach

Helping those in need is at the heart of our understanding of the Gospel as we reach out to the larger community of the city, the nation, and the world.

The Outreach Committee is the primary avenue to put this core value into action. We seek to offer programs that have broad parish participation, including opportunities for our youth, that serve a meaningful number of people and that provide an ongoing relationship with the organization served. The Outreach Committee is always open to new programs as members come forward interested in addressing a need in the community, whether local or global. A summary of our current outreach ministries follows.

parishioner insight

Once you realize how much Christ actually loves you and how much he does for you, he really likes it when you share it with others. Sometimes, due to the circumstances, this can be very difficult, scary, even dangerous. Often, what any of us can do is in fact a very small or simple thing. But in the great scheme of things, that little act of love can have a huge effect in the lives of others. All we need to do is live, love, and seek for the opportunities to serve.

Comfort Bags for the SAFE Alliance



In 2014, at the request of the director of the Sexual Assault Victims Advocacy program at the SAFE Alliance we began delivery of handmade bags filled with 15 items, ranging from the practical (notebook and pen) to the comforting (lavender sachets and stress balls), with a handwritten note of encouragement to survivors of sexual violence and assault. This program has widespread parish participation. At the pre-pandemic “sew-ins” where we make the bags, there may be six sewing machines running, four ironing boards in service, three tables of people stringing ribbon, and children running the bags between stations during construction. We serve about 600 survivors in a year.

Hospitality Baskets for those with a loved one in care at Christopher House



This project began in 1995 when several members were deeply moved by the loving care one of our members received during his last days at Hospice Austin’s Christopher House. Informed by their staff that there was no provision for families who often arrive on very short notice from out of town, we create baskets containing toiletries, game books, note cards, and snacks, and make deliveries weekly.

Hands for Hope



El Buen Samaritano, an outreach ministry of the Diocese of Texas that primarily serves low-income Latino families, organizes this Thanksgiving meal program. Our members provide significant financial support, and several St. George’s parishioners are there on the day of delivery to box the food and hand out the meals.

HELPS International



HELPS International is a nonprofit that provides social, educational, and spiritual programs in the developing world. For 10 years, the Women's Book Group has sponsored the education of a child in the HELPS school in the remote mountainous village of Santa Avelina, Guatemala. The school provides a field trip for 5th graders to visit the nation's capital to see a wider world of opportunity and cultural heritage. Over the last four years, several parishioners have made the trip with the children. St. George's raises funds for the trip, with grant support from the Diocese of Texas. Parishioners also make contributions of school supplies for our volunteers to take with them.

parishioner insight

In St. George's Episcopal Church I have found a community of fellow peaceful warriors who walk their talk of working for social justice in the world. After visiting other Episcopal churches upon moving to Austin, we were welcomed by this diverse, accepting, and non-judgmental group of seekers determined and working together to bring God's Kingdom to this present world. It is important to me to try and integrate my beliefs into my life, with a special concern for helping those less fortunate than ourselves.



Christmas Outreach

During Advent and Christmas, parishioners donate grocery gift cards to residents of St. George's Court and Casa Marianella, an Austin shelter for international refugees. The cards are delivered in individual felt stockings, usually decorated by the community at the annual parish retreat.

Food Bags for Any Baby Can

Since the 1980s, we have supplied nonperishable groceries for emergency relief for Any Baby Can, a local nonprofit that serves families with medically fragile and special needs children. This program is currently on hold because case workers are not going into the field during the pandemic.



Core Value: Community

We believe that as church we become the body of Christ. Our goal is to build a diverse and inclusive community that recognizes the unique contributions of each member to bring about the greater good seeking to strengthen the bonds that join us in God's work.

Through worship, fellowship, and service, we form strong community bonds inside and outside of St. George's. We enjoy each other's company, and new members are enthusiastically welcomed and folded in. Some of the best ways we've found to strengthen our relationships with each other and to welcome newcomers include:

Annual Parish Retreat
Coffee Hour
Fifth Sunday Potluck

Men's Breakfast Group
Women's Book Group
Women's Spring Retreat



parishioner insight

When my husband died unexpectedly, this community sprang forward with the lifeline. They visited, brought food, flowers, and books, arranged the service and reception, sang the anthem, sent messages of love and hope, and stayed close with calls, visits, and invitations to outings for weeks.



parishioner insight

In community we feed each other and become more than the sum of the parts. At the communion rail we get to take a little peek into a heavenly banquet, just for a moment, where all differences cease and all are welcome. I could do that in my head I suppose, but there's something that goes deeper about walking through it with my own body. Community gives me nurture and strength.

St. George's has contributed to the greater Austin community by establishing two institutions that serve its residents.

Close to us physically and longest in history is **St. George's Episcopal School**, founded for four and five year-olds in 1966. Now serving children three months through pre-kindergarten, the school's goal is for "each child [to] grow and develop spiritually, cognitively, physically, emotionally and socially within a Christian atmosphere." The school has an enrollment of 93, is served by a head of school and 22 full- and part-time staff members. It is governed by a board of nine, which includes the rector and four

parishioners. The school is accredited by the National Association for the Education of Young Children, recognized as a 4-Star school through Texas Rising Star, licensed by the Texas Department of Family and Regulatory Services, and a member of the Southwestern Association of Episcopal Schools. Traditionally, the rector has held a weekly chapel service for the school. The church and school hold a joint service at least once a year before Labor Day with the Blessing of the Backpacks.





St. George's Court was founded in 1984 for low-income seniors and people with disabilities. Located about three miles northwest of the church, it is a residential facility with

60 one- and two-bedroom apartments. The Court offers many wraparound services, including transportation to medical appointments and shopping, social services, and access to the Central Texas Food Bank, as well as social activities when possible.

The Court is professionally managed by Alpha Barnes, though it is governed by a nine-member board that includes the rector and four parishioners. St. George's Church supports the Court through quarterly donations to the Court's account at the Central Texas Food Bank, gifts of grocery gift cards at Christmas, and assisting with other needs as we become aware of them. During the polar freeze in February 2021 when the Court experienced frozen pipes, parishioners brought water supplies. Pre-pandemic, we enjoyed attending the Valentine Pancake Breakfast and the annual Christmas party.

neighbors

St. George's Church has low, natural architecture as well as two or three vacant lots, so the campus nestles easily and unobtrusively into the residential neighborhood. We offer the parish hall for neighborhood association meetings and other gatherings. Neighbors cross the property every day, walking their dogs, riding bikes, or stopping for respite in the

Memorial Garden or labyrinth. St. George's has provided meeting space for 12-step groups for decades. Neighbors experiencing homelessness come by for water and assistance. Possibilities for ministry and outreach abound in both the older adjacent neighborhood and the new nearby Mueller development.



Core Value: Acceptance

Our church encompasses people in different places on their journey of faith and understanding, including many who do not come from a Christian background. Aware that no one has all the answers, we seek dialogue with people of other faiths to bring the Holy Spirit into a broken world.

St. George's has a strong, active membership. Even COVID restrictions and the need for social distancing did not diminish our passion or our faith. We continued to engage via virtual community and to provide opportunities for lay-led worship ministry and for outreach that directly serves the needs of those around us. In this spirit, we hope to continue building a community that is exciting and welcoming to new members, especially to younger adults and families. We believe

that by drawing in these adults and families, we will strengthen our congregation with enthusiasm and a continued community of faithful believers. Our focus is not on simply adding more names to the roster, but rather to ensure the community of St. George's is sustained and nourished so that our mission may continue.

Our style is informal, open, and accepting. We value people for their individual gifts, without much regard for

social conformity or economic status. Because we value each other, we extend care and help when a member is ill or has financial challenges. We give special concern to our members who have no family or whose resources are known to be limited. We share the pews with parishioners of different political ideology. We explored what the Torah meant to rabbis and Jesus alike in a Lenten class on “The Torah of Jesus.” An unhoused neighbor came regularly to our services and coffee hour, offering her perspective

on helping others in her situation to a group of parishioners working on a community engagement plan. We learned about the commonalities between Christianity and Islam from Muslim members of the Dialogue Institute of the Southwest – Austin.

In these and other ways, we work to be inclusive and to meet people wherever they may be on their journey through life.



parishioner insight

One of the most moving experiences of my life came as St. George's marched in Austin's Pride Parade. I had not expected to be thanked so profusely for our presence there. We were very close to the parade attendees as we walked with our signs proclaiming that God is Love. Over and over, I saw relief and gratitude on the faces of people who had felt shut out of that love.



Core Value: Lifelong Learning

We think that faith, reason, and tradition are worthy of lifelong study. We believe that by following these paths of study we draw closer to God. We have found that the more that we know about our faith, the more God's grace manifests in our daily lives and our interactions in the lives of others.

This is a parish full of curious minds, and we love to learn!

Opportunities for the adults

Wednesday Weavings is an adult discussion group, meeting twice a month on Wednesday evenings since 2013. Using Forward Movement's Bible Challenge books to structure the

parishioner insight

There's no question why the church drew me in. Within this church I have found the freedom to explore my own spirituality within the overall context of shared faith.

study, the group starts with a shared meal and concludes the discussion with Compline. Currently, the group is reading *The Way of Love Bible Challenge*, which was preceded by *The Social Justice Bible Challenge*. The latter prompted the creation of a shared document where parishioners

recorded ideas for how we can create equity for all of God's children through individual and common action.

St. George's also serves adults in Christian formation through periodic lifelong learning classes, taught in the past by the rector, seminarians, parishioners, or guests. We also host a Lenten series of classes each Wednesday of the season. Recent Lenten class topics have included:

Engaging Our Faith Tradition(s) as We Walk with Jesus towards Calvary

Scene and Unseen – Confronting Racism through Film

What is Truth in a Fake News World?

Opportunities for the youth

St. George's enthusiastically welcomes children and young people of all ages. Their presence is so important that the children and youth are invited to join the processional each Sunday. After a prayer, they leave for their weekly Christian education classes – either KidsWord (K-5) or YouthWord (6-12). Students and teachers rejoin the service at the passing of the Peace. Three seasoned educators lead these programs, and other adults offer to teach occasionally. A 10-week series on the Eucharist, *We Give Thanks: Preparation for Early Communion*, is offered when the teachers feel there is a need. Teachers introduce children to the sacrament by exploring themes such as forgiveness, sharing, and belonging.

The KidsWord and YouthWord teachers organize our Christmas Eve re-telling of Christ's birth. Youth and adults don costumes of angels, shepherds, and the Holy Family and process up the aisle during the story. You might even see a wise man gallop in on an invisible camel!

The young people (and their parents) also orchestrate two other annual parish events: our Shrove-Tuesday-on-Sunday pancake lunch and the Pink Candle Party on the third Sunday of Advent. Parishioners look forward to each of these joyfully indulgent celebrations and donate money toward a cause the children and youth choose beforehand.



The rector we seek

On the previous pages, we've explored how we put our core values into action. This exploration helped guide us in articulating the qualities we hope for in a new rector for St. George's. We are a passionate group and are looking for a rector who would nurture those passions. We would like a partner who can help equip us for the ministries that call to us. Because St. George's has resources for only one clergy person, we need a rector who is well-organized and can handle multiple responsibilities at a time.

The rector oversees a staff of one half-time parish administrator and one quarter-time music minister. Our proximity to the Seminary of the Southwest affords the opportunity for the rector to mentor field seminarians.



We are looking for someone . . .

Who will inspire us through exceptional preaching and engaging liturgy

Who will help us focus our energy and develop lay leaders for new ministries

Who will be a pastoral presence when members are suffering or in need

Who will guide us toward financial generosity

Who will help us strengthen relationships with each other and our neighbors

Who will provide meaningful Christian education opportunities

Who has strong leadership skills but will work collaboratively with laity in decision-making

Who will connect with St. George's School, offering support for the head of school, board, and staff, as well as the students and their parents

Who is grounded in faith through prayer and spiritual practices

Who will energize us to develop and implement plans for growth of the campus

Our history

St. George's roots go back to 1949, when the Diocese of Texas purchased property at 38½ Street and Basford Road for an Episcopal congregation to serve the rapidly developing area northeast of downtown Austin.



The Right Reverend John E. Hines, then Bishop Coadjutor of the Diocese of Texas and later Presiding Bishop, arranged for the purchase and relocation of a surplus Army chapel from Bastrop's Camp Swift to the Basford Road site (under the cover of night, in a dash across the main runway of Austin's airport). A small group of Austin-area Episcopalians began meeting for worship services in December 1949 in the former chapel (*top left*). Bishop Hines named the fledgling church St. George's.



St. George's was recognized as a mission by the Diocese of Texas on January 23, 1950, at the 101st Diocesan Council meeting in Waco. The Rev. Bill Mahan arrived in 1951 to serve as first vicar and oversaw the building of a parish hall on the Basford Road property (*middle left*).

Under the leadership of the Rev. Peter Katt and dedicated laypeople, property at 4301 East Avenue (now the northbound frontage road of Interstate 35) was acquired for a new church campus. Ground was broken in 1956 (*bottom left*) and the current church building was dedicated on July 7, 1957.



St. George's saw tremendous growth under the Rev. Malcolm P. Riker, who led the congregation to self-supporting parish status in 1960. The Rev. Edward M. Hartwell's tenure during the 1960s was noteworthy for the founding of St. George's Episcopal School and construction of the associated classroom and office buildings.

Under the 20-year pastorate of the Rev. John W. Price (1968-1988), St. George's flourished, expanding its parish hall and office facilities, and becoming active in renewal movements such as Faith Alive! and Cursillo. With vision and leadership from the rector and the laity, the parish reached out to serve the elderly and individuals with disabilities through the founding of St. George's Court in 1984. John Price was one of the first Episcopal priests in the area to provide pastoral support to Austin's gay and lesbian community, and St. George's became known as an accepting, inclusive parish.

The subsequent 20-year pastorate of the Rev. David W. Hoster (1989-2010), with associate rector the Rev. Judith R. Liro, saw an expansion of the parish's outreach and hospitality ministries. The historic Wright-Giles House on the church property was renovated by the HIV Wellness Center (later known as the Wright House Wellness Center); from 1995 to 2015, St. George's leased the house to the center, which offered counseling and therapy to people living with HIV and AIDS. St. Hildegard's Community, an intentional, contemplative community with a social justice ministry, was founded at Epiphany 1996 as a separate worshipping entity within the parish.





At the time of the calling of the Rev. Kevin LJ Schubert as interim rector in 2010 and as rector in January 2011, the neighborhood around St. George's was undergoing a revitalization, including the development of the Mueller neighborhood on the former site of the Austin airport. With the influx of young families into the neighborhood, St. George's Episcopal School experienced record growth and vitality, with guidance from the rector and the head of school. Meanwhile, service and witness to the wider community continued to expand. In 2015, St. Hildegard's held its last worship service at St. George's and is currently in provisional status to become a canonical Episcopal Christian Community.

Recent circumstances, including a global pandemic, grappling with virtual worship services, a transition of rectors, the expansion of neighboring homeless encampments, and a rash of vandalism in the church and office buildings, have both challenged and strengthened the parish. As we begin the search for our next rector, we do so with the same spirit of "faith and great hope" present at the founding of St. George's (as a charter member described it), building on our 72 years of community and ministry and looking forward to continuing the good work that God has begun in us.

Statistically speaking

Membership

Statistics in Table 1 are from St. George's 2019 and 2020 annual parochial reports.

Table 1. Membership statistics 2019-2020.

	2019	2020
Members	130	125
Communicants – Adult	99	96
Communicants – Youth	26	24
Other Active Congregants	40	40
Baptisms	1	1
Church School Enrollment	30	n/a
Religious Education / Formation – Youth	n/a	20
Religious Education / Formation – Adults	75	60

Finances

St. George's Church is financially stable, with no outstanding debts. We have numerous dedicated funds for our varied outreach and ministry efforts, but no endowments. However, several of our buildings are older and come with the requisite expenses of maintaining such buildings.

The largest sources of income for St. George's general operating budget, as shown in Figure 1, are pledge income and offerings (donations made by those not pledging), which make up about 75% of our budgeted revenue. We received 61 pledges totaling \$194,494 for the 2020

fiscal year, which was an increase of six pledging units and more than \$16,000 from the previous year. Pledges for the 2021 fiscal year fell off considerably, undoubtedly due to pandemic-ridden uncertainties. For 2021, we received 39 pledges for \$148,682, which included four new pledges. Nearly one-third of households that pledged in 2020 increased their pledges for 2021, and only 20 percent decreased their pledge. Pandemic-related grants from the federal government's Paycheck Protection Program and the Diocese of Texas, along with building use income from St. George's School will help

make up for the downfall in revenue in 2021.

As shown in Figure 2, personnel costs comprise the largest percentage of St. George's budgeted expenses. Along with personnel, building and maintenance costs—which include expenses shared with St. George's Episcopal School—and diocesan assessments make up 85 percent of the parish's operating expense. Table 2

provides the total operating revenue and expense amounts for 2020.

In addition to the General Fund, which is our operating budget, St. George's maintains other funds for designated purposes. Such funds include Outreach, Music, the Memorial Fund, Capital Improvements, EYC, and Other Designated Gifts. Table 3 provides the revenue and expense amounts from these non-operating budget funds for 2020.

Table 2. 2020 General Fund Revenue and Expenses.

Revenue	\$231,894
Expenses	\$203,987
Balance	\$27,907

Figure 1. 2020 General Fund Revenue.

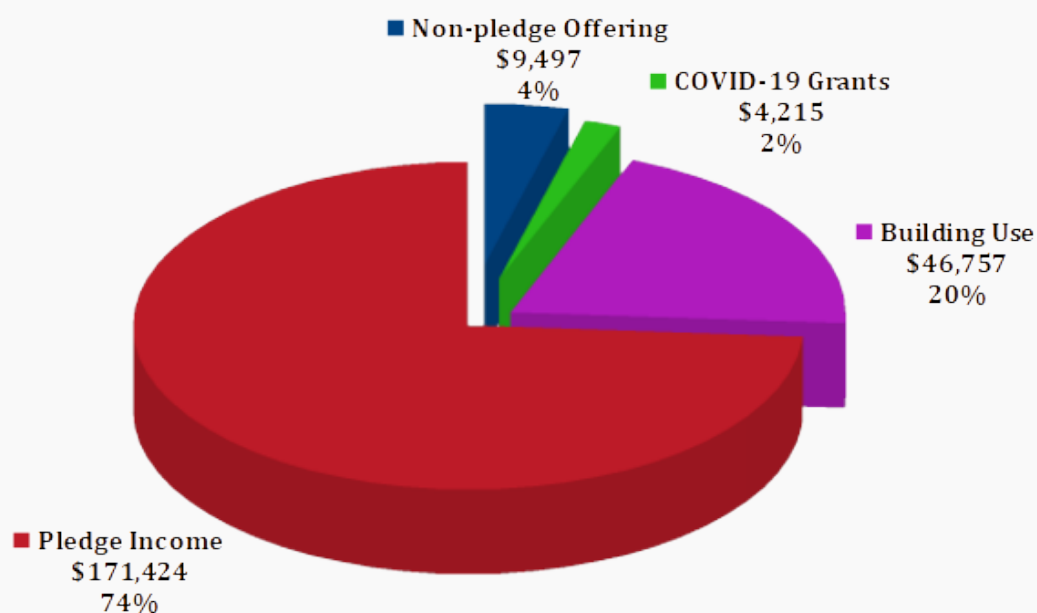


Figure 2. 2020 General Fund Expenses.

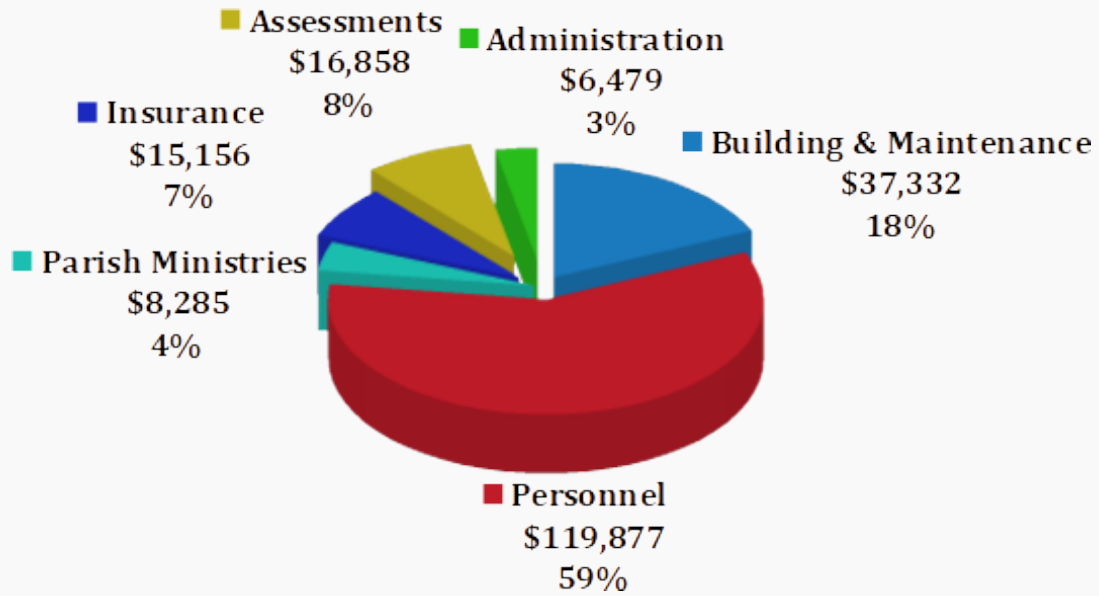
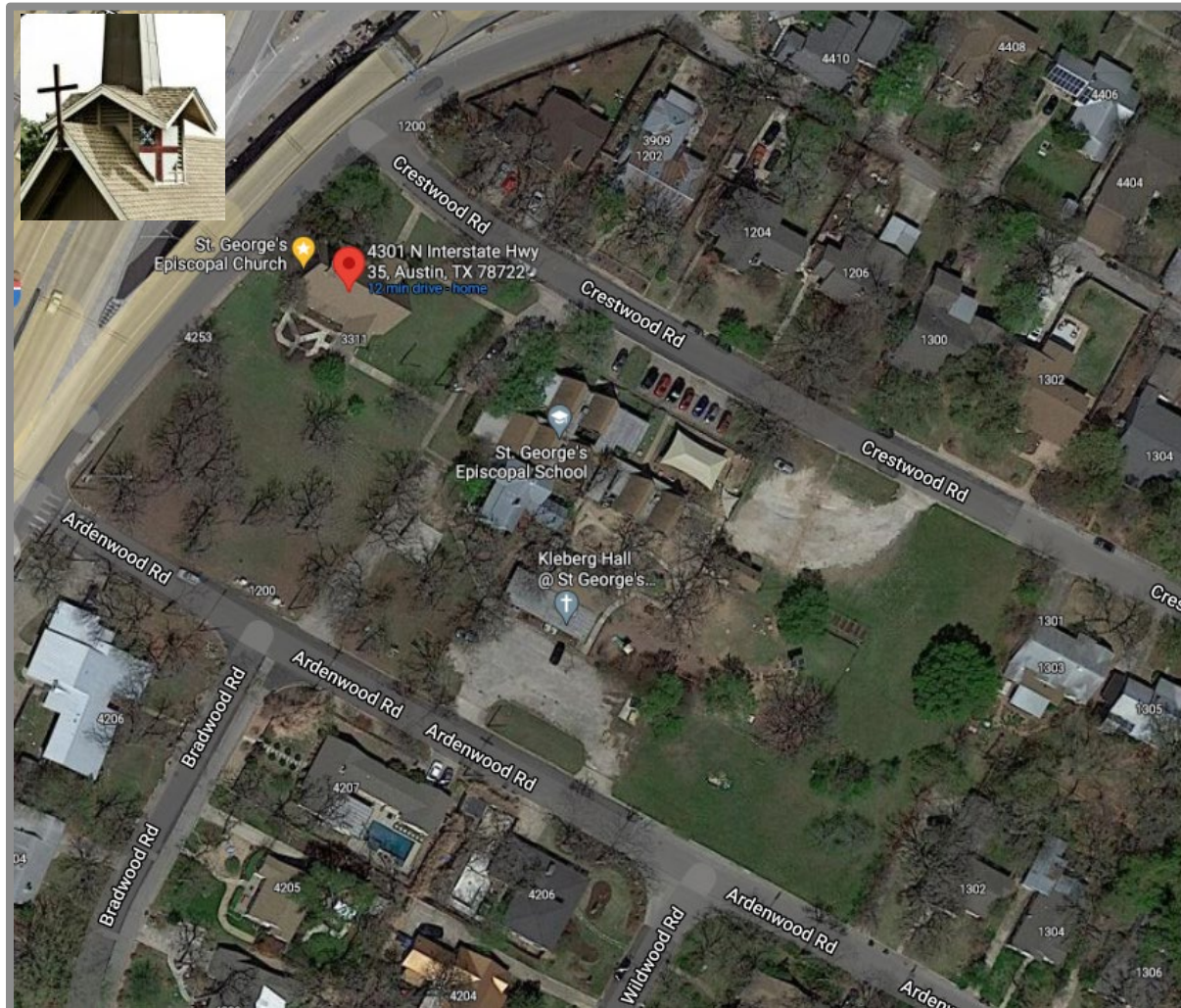


Table 3. 2020 Non-General Fund Revenue and Expenses.

Revenue	\$19,702
Expenses	\$32,503

Our church home

Travelers along the northbound upper deck of Interstate 35 usually first notice St. George's from the steeple with Episcopal Church shield peeking above the roadway.



Aerial view of St. George's Episcopal Church and School, showing (from upper left) the 1957 church building and Memorial Garden, the 1966 school buildings, the 1879 Wright-Giles house (green roof), and Kleberg Hall (our parish hall). Image courtesy Google Maps.



1957 Church Building. Designed by the prominent local architectural firm of Lundgren & Maurer, the current church building was completed in 1957 and is a midcentury take on the English Gothic style. It features a vaulted interior of exposed limestone and stained redwood, and seats about 160 people.



The 1976 installation of the pipe organ required a complete reorientation of the sanctuary, such that the organ and pipes were fitted in what had been the original chancel at the west end of the building, and the altar was moved to what had been the back of the nave in the east end. As a result, first-time visitors are often surprised when the exterior doors lead into the front of the nave!

Other campus elements



1879 Wright-Giles House. This Italianate farmhouse came with the property when the church acquired it in 1956. St. George's and community partners have used the house for a number of purposes over the years, including seminary housing and a center for holistic counseling and therapy to people living with HIV and AIDS. Currently, we use the two-story house for parish offices, meeting spaces, and archives.

1966 Education and Office Buildings. Designed by another prominent local firm, Barnes Landes Goodman Youngblood, the distinctive buildings with steeply pitched gables house the classrooms and offices of St. George's Episcopal School. The school is in the process of adding two additional classrooms in a separate building east of the current covered play yard.

1960 Parish Hall (1982 expansion). Kleberg Hall (pronounced Clay'-berg) has seen innumerable coffee hours, receptions, and pot-luck meals. It has also been the setting for a variety of parish ministries, including preparation of egg breakfasts for day laborers, housing the homeless on freezing nights, 12-step meetings, and Comfort Bag sew-ins. St. George's School uses Kleberg Hall on weekdays for extracurricular classes and a place to take the children when weather prohibits use of the playground.

Memorial Garden. Since 1986, our memorial garden, which lies just outside the south entrance to the church building, has provided a place for the ashes of parishioners and friends to be scattered. The names of those interred here are inscribed on small plaques inside the south wall of the church. The garden is a powerful reminder of our connection to the saints at rest. A landscaped area with benches provides a peaceful place for informal conversation or individual contemplation.

Labyrinth. Located under the canopy of trees between the church building and the Wright-Giles House, the labyrinth offers a place for meditation and contemplation even as the world rushes by on the nearby freeway. Built in 2005 by the youth and their adult sponsors, the rocks were hauled from myriad locations, including the set of the 2004 movie, "The Alamo."

The age of our buildings and the campus as a whole present challenges for members and guests whose mobility is restricted. We currently do not have consistent, accessible sidewalks to ease the transition from our parking areas into the sanctuary, or between the sanctuary and our parish hall. Additionally, the restroom facilities in our sanctuary are located in the basement, which is only accessible via a stairwell. Our goal is to address these accessibility issues and ongoing maintenance concerns, to ensure all are comfortable and able to join us in worship and ministry.



A photograph of the Austin State Capitol dome, a large white building with a prominent dome and a spire, viewed through the dark, leafy branches of trees. The scene is set in a park-like area with a black wrought-iron fence in the foreground and a green lawn. The sky is clear and blue.

Our city

Austin is the state's capital, and internationally known as a destination for music, art, and all things creative. Its slogan, "Keep Austin Weird," is an homage to the focus on welcoming a wide variety of peoples and cultures into an ever expanding canvas of food, art, and musical expressions.

St. George's proximity to downtown Austin and the University of Texas at Austin provides countless opportunities for our congregation and its leadership to engage and speak to many communities and their people.



Home to the famous South by Southwest annual music festival, Austin features countless venues for taking in a wide variety of live music events, from large concerts to small, intimate jam sessions, and everything in between.

On the professional side, Austin is a major technology hub, with many Fortune 500 companies having a strong presence, including IBM, Apple, Amazon, Facebook, and Oracle. The commercial and technical opportunities present in Austin help expand the market for residents, as well as providing a myriad of employment opportunities for Austin's ever-growing population.

Austin boasts a great variety of outdoor activity and the spaces to make those enjoyable, from countless parks and trails to Lady Bird Lake for kayaking and paddle boarding. Austin's roads are remarkably bicycle friendly, and many of the local parks and businesses welcome pets to join you on your outings.

The combination of an active arts scene, along with thriving technology and commercial ventures, makes Austin a city brimming with

growth and alive with an incredible array of history, cultures, and expressions.

[Visit Austin website](#)



Our invitation to you

The sign that graces the entrance to our church welcomes those who read it with a simple but heartfelt message. And now, we offer this invitation to our new rector as you discern your call to ministry at St. George's Episcopal Church in Austin, Texas:

If you are *curious*, look for answers here.

If you have been *hurt*, look for comfort here.

If you are *joyous*, look for us to join you in song.

If you are *overwhelmed*, look for peace.

If you are *enthusiastic*, come praise with us.

If you are *lonely*, look for companionship.

If you seek *quiet*, you can be still among us.

If you *love God*, find others who also share that love.

In all these ways and more, we invite you to join us, and write a chapter or a volume of your story in our family.



St. George's
Episcopal Church

St. George's Episcopal Church
4301 North IH-35
Austin, Texas 78722
(512) 454-2523

Office email: stgeorgeaustin@gmail.com

Our website: www.sgchurch.org

Our Facebook page: www.facebook.com/StGeorgesEpiscopalChurch/